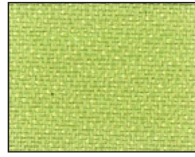


LA011 CEYLON YELLOW



LA171 SEA SHELL



LA021 LEMON



LA027 APPLE GREEN



LA333 BRISTOL GREEN



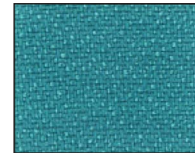
LA121 BRIGHT ORANGE



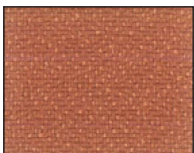
LA023 STEEL



LA086 RUM



LA098 TURTLE



LA012 GINGER SPICE



LA018 DENIM



LA099 ARECIBO



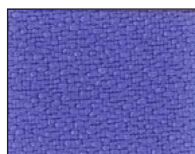
LA022 AQUA



LA009 CINDER



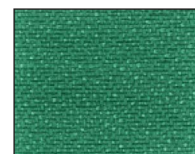
LA017 DESERT ROSE



LA019 VIOLET STORM



LA097 BLUEBELL



LA025 FROSTY SPRUCE



LA008 SLATE GREY



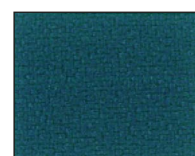
LA014 FLAME



LA028 AMETHYST



LA001 PALACE BLUE



LA005 PORCELAIN



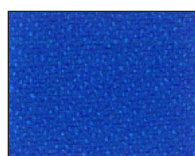
LA024 RAIN CLOUD



LA015 CRIMSON



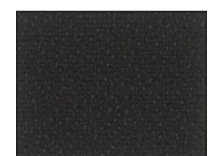
LA016 PURPLE



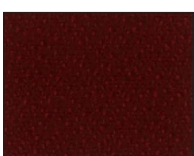
LA002 TRUE BLUE



LA004 SHADED BLUE



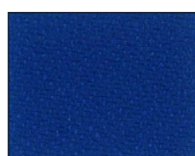
LA010 PHANTOM



LA013 RUBY WINE



LA020 SPECTRUM



LA003 INDIGO



LA006 BAYBERRY



LA007 BLACK

# NEW ICON

---

## Technical Specifications

---

Composition	100% Polyester
Weight	240 Grams per square metre. 408 Grams per running metre
Width	170 cms/67" +/-2%
Abrasion	In excess of 50,000 Cycles (800g/12kpa) Martindale
Flammability	BS EN 1021-1 : 1994 (Cigarette) BS EN 1021-2 : 1994 (Match) BS 7176 : 1995 Low Hazard California TB 117 Section E BIFMA Ff1 - 78 NFPA 260-1989 UFAG, Class 1  Flammability performance is dependent on the combination of material used.
Fastness to light	5+ [BS 1006 (1990)]
Fastness to rubbing	Wet : 5 Dry : 4.5
Maintenance	Professional cleaning is recommended
Colour matching	Batch to batch variations in shade may occur within commercial tolerances.
Hydroguard	This is a special silicon treatment applied to provide water and stain repellency
Backcoating	A light backcoating is applied to give dimensional stability and additional