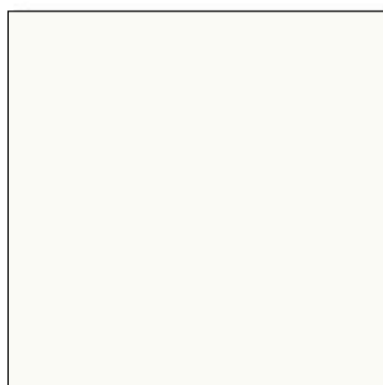


EPOXY

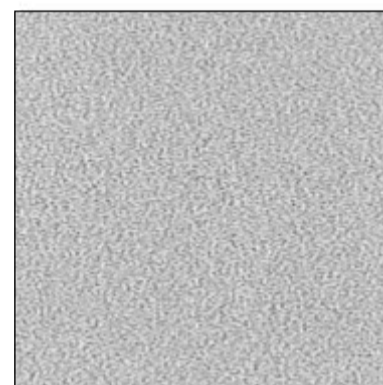
powder coating



BL303 Black Sand



WS333 White Sand



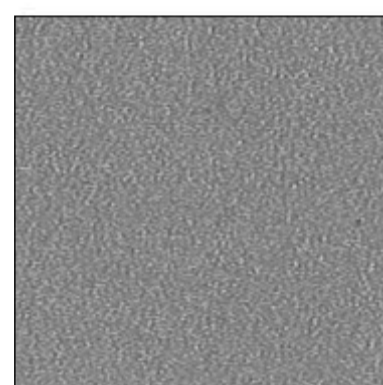
SS208 Silver Smooth



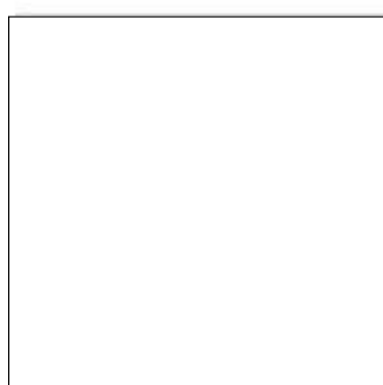
GP394 Graphite Sand



BS314 Beige Sand



SM306 Silver Matt



WG022 White Gloss



CH109 Champagne Gold



Powder coating product data sheet

TEST PARAMETERS	SPECIFICATION	TEST DATA
Salt Spray	ISO 7253 (250hours)	Pass - no corrosion creep more than 2mm from scribe
Cyclic Humidity	BS3900-F2	Pass - no blistering or loss of gloss
Distilled water immersion	BS3900-F7 (240 hours)	Pass - no blistering or loss of gloss
Reverse Impact (5/8in ball dia) inlb	30inlb	Pass
Forward Impact (5/8in ball dia) inlb	30inlb	Pass
Erichsen Cupping In mm	6mm	Pass
Mandrel Bend Test In mm	4mm	Pass
Pencil Hardness (Mitsubishi Uni)	H	Pass
Cross Cut Adhesion In mm (100 / 100)	1mm	Pass

'Every Color is Green'. Full range of colors that's strictly designed to be environmental friendly coupled with highest durability and esthetic appearance. All powder coatings applied are fully compliant to RoHS and REACH specifications.

MALAYSIA

Bristol Technologies Sdn Bhd

Lot 5178 Balakong Jaya Light Industri,
43300 Seri Kembangan, Selangor, Malaysia.

Tel : +603 8962 2182 / 3233

Fax : +603 8962 6322

Email: sales@bristol.com.my

Bristol products distributed exclusively by Office Design Studio



Office Design Studio

5230 Pacific Concourse Dr. Ste 105
Los Angeles, CA 90045

Tel: 310-725-9911

www.OfficeDesignStudio.com

www.bristol.com.my

The information given in this sheet is not intended to be exhaustive and any person using the product for any purpose other than that specifically recommended in this sheet without first obtaining written confirmation from us as to the suitability of the product for the intended purpose does so at his own risk. Whilst we endeavour to ensure that all advice we give about the product (whether in this sheet or otherwise) is correct we have no control over either the quality or condition of the substrate or the many factors affecting the use and application of the product. Therefore, unless we specifically agree in writing to do so, we do not accept any liability whatsoever or howsoever arising for the performance of the product or for any loss or damage (other than death or personal injury resulting from our (negligence) arising out of the use of the product. The information contained in this sheet is liable to modification from time to time in the light of experience and our policy of continuous product development.